

SEASONS VETERINARY CLINIC

8-655 STERLING LYON PARKWAY 204-477-1293 SEASONSVETCLINIC@GMAIL.COM

June 1st is the last day to take advantage of our spring promo!

SPRING PROMO

From March 1st to June 1st, receive a **COMPLIMENTARY WELLNESS EXAM** with the purchase of a Snap 4Dx test + 6 months of tick &/or heartworm prevention!

Check out our promotions tab on our website (seasonsvetclinic.com) for more information, or give us a call!

HEARTWORM

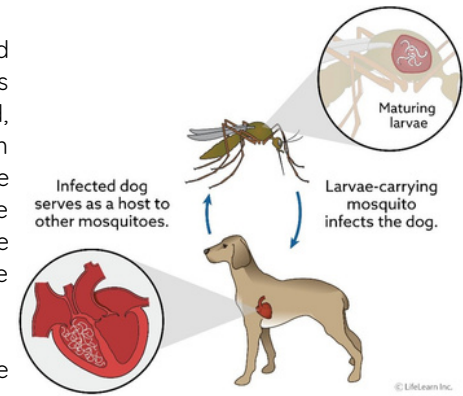
By Dr. Bronwyn Chisholm

Heartworm is a nasty parasite that is transmitted through the bite of an infected mosquito. In our climate and location the season of concern is June 1st-Nov. 1st. Both dogs and cats can be infected with this worm, and while dogs are more susceptible to infection, cats' small size means that even a single worm can cause significant illness and even death.

Our pets are infected when a heartworm-positive mosquito bites them and injects the tiny heartworm larvae into their body. These tiny worms then travel through the small blood vessels, heading to the heart. It can take 6 months to reach the heart, where as adults they grow large and numerous enough to block the main vessels leading out of the heart.

Although heartworm is complex, risky and expensive to treat, we can prevent serious infection easily: Monthly chews such as Heartgard, or a combination tick/heartworm prevention such as Nexgard Spectra, kill any heartworm larvae that our pets may have been infected with in the previous month, before they become more mature and the worms are no longer susceptible to the monthly preventatives.

So for all dogs, and any cats that spend time outdoors, we recommend having them on a heartworm prevention starting June 1st, with the final dose on Nov. 1st.



PET OF THE MONTH: THE PERFECT STORM

A cross between a Great Dane and a Mastiff, at 86kg (189lb), Storm is an impressive boy! Great Dane's are known for their friendliness and devotion to their owners, while Mastiffs are courageous gentle giants. Neither breed is a push-over, and if they feel their family is threatened, they will devotedly step up to protect them. And a dog of this size makes a formidable opponent! It is a good thing Storm is so lovely and has such wonderful owners helping him grow into a chipper, happy guy!



Here is what Storm's owners have to say about him:

"Storm is an oversized lap dog. He is constantly surprising us with his unique personality. He loves to hop and play with his brother. We can't go anywhere without people admiring his size, he gets lots of attention at the dog parks."

TRIVIA CORNER

To be eligible, you must be a client and cannot have won within the previous 6 months.

1. What is the scientific name for heartworm?
2. How do we prevent serious infection from heartworm?
3. Where and for what were Great Danes originally bred for?



Congratulations to Beau and his owners for winning last month's trivia contest!

Please let us know if you'd prefer to receive your newsletter electronically